

# TECHNICAL RIDER

## SUPER SUPERFICIAL



Premiere 30 June 2023 in Ufer\_Studios 1 Berlin  
Rider's update: 21 March 2026

# CONTENT INDEX

**Duration // p. 2**

**Team // p. 2**

**People on stage // p. 2**

**People running the show // p. 2**

**What is on stage // p. 2**

**What happens on stage // p. 2**

**Special informations about the show // p. 3**

**Space // p. 3**

**Notes | Requests // p. 3**

**Videos: Trailer and full show // p. 4**

**Stage | Space plan // p. 5**

**Sound // p. 6**

**Sound | Space plan // p. 7**

**Video // p. 8**

**Video plan // p. 9**

**Light list and plan // p. 10**

**We bring, We need // p. 11**

**Staff required for set up and shows // p. 12**

**Dressing room and annexed spaces // p.13**

**Contacts // p.14**

# SUPER SUPERFICIAL

## TECHNICAL RIDER

### DURATION

around 55 min

### TEAM

1. Kysy Fischer - she/her - Choreographer
2. Mariana Romagnani - she/her - Performer
3. Manoela Rangel - she/her - Performer
4. Rafaella Marques - she/her - Performer
5. Kriton Beyer - he/him - Musician
6. Leo Naomi Baur - they/them - Video
7. Óscar Barbosa - he/him - Production and Choreography assistant
8. Raquel Rosildete - she/her - Lighting

### PEOPLE ON STAGE

3 Performers, 1 Musician, 1 Video designer, 1 Light designer

### PEOPLE RUNNING THE SHOW

Raquel Rosildete / Ini Dill - Lights

Leo Naomi Baur - Video

one technician - Sound (the musician controls the sound mixer during the show)

### WHAT IS ON STAGE

FOH (Video, Light)

1 table for FOH (H: 100)

3 Speakers for stage design and sound (2 Subwoofers with wheels and breaks, 1 Top around 10kg, Dimensions: aprox. 50x50x50)

2 Projectors on 2 trolleys (Hunde)

1 Daxophone (Musical Instrument), Pedals and sound mixer

1 small table for the sound mixer on stage (aprox. 50 cm high)

1 stool for musician

### WHAT HAPPENS ON STAGE

Super Superficial is a dance performance based on the naked body in contact with surfaces, deformation of images of beauty and fakeness. If possible, in the beginning the 3 performers will use a window board (left side, audience view), so there is daylight on the stage. After 15 min the curtain in front of the window will be closed, the performers are mainly on stage, the audience stay seated the whole show. The concept of the performance plays with the images of passivity of the female naked body in art history and transforms these bodies in active, profane, grotesque presences. The entire crew is on stage (3 performers, 1 musician, light and video designer), the musician will have a solo moment when he controls the light through the volume of his music.

## **SPECIAL INFORMATIONS ABOUT THE SHOW**

- The music will be loud, we need one pair of foam earplugs for each audience member
- The music instrument will control LED lights on the floor in a moment (this needs to be set up with the light technicians)
- Nakedness, not pornographic
- Use around 500ml of water or plant-based milk, which is spilled on the floor during the performance

## **SPACE**

- If the venue has windows: Platform that reaches up to one of the windows (whichever has the most city lights) as a window sill with stairs
- Window on one side needs to be uncovered, so that the city light can shine through for the silhouette effect (see page 4)
- If there are no windows: a white “Opera” to create the silhouette effect
- White dance floor covering the stage
- Stage: ideal minimal size 11x11m
- The audience will be frontal
- 1 Podest 0,5m H: 100cm (tech table for video and light designers on stage)
- 3 Speakers for stage design and sound (2 Subwoofers with wheels and breaks, 1 Top, Dimensions: aprox. 50x50x50)
- 4 Speakers in the 4 corners of the space
- We use 2 naked walls for projections, we have to talk about the possibilities

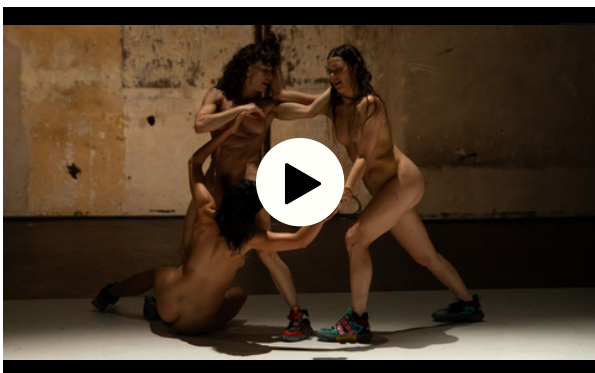
## **REQUESTS**

- To arrange an initial video call with the technical responsible from the venue and our team.
- We request to have a set up and rehearsal’s plan made in agreement with our team (production and designers) and the technical responsible for the venue.
- We request to receive a technical Rider + Images of the venue and rigging positions and if available, 3D and 2D file in CAD format of the theater.
- The venue will provide a lighting technician for set up, recording/retouching cues.
- Before starting the show, announce to the audience that filming or photographing are not allowed.

# SILLOUETTE EFFECT



## TRAILER



## SHOW

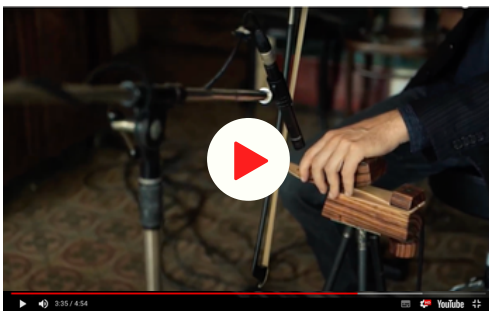




## SOUND

- PA system consisting of:
  - \_ 4 speakers around the stage (depending of the size of the stage)
  - \_ 3 Speakers for stage design and sound (2 Subwoofers with wheels and breaks, 1 Top, Dimensions: approx. 50x50x50)
  - \_ 1 sound mixer on stage with at least 4 input channels with at least one “aux/bus output” to control the speakers separately (placed in the musician area).
  - \_ It is possible to have an extra sound board in the FOH of the theater to plug the musician’s board on stage and send it to the PA
    - Cables long enough to connect the instrument (daxophone) to the PA system
    - Cables that are long enough for the speakers on stage (see picture below)
    - Additional cable reels for floodlights.
    - 4 100W LED Floodlights that go on and off when the instrument is playing (working as a potentiometer) and can be operated by the musician.
  - \_ His light control system has a ~3000W limit. So, he cannot connect bigger floodlights.
    - 1 hand microphone without cable for the choreographer in rehearsals

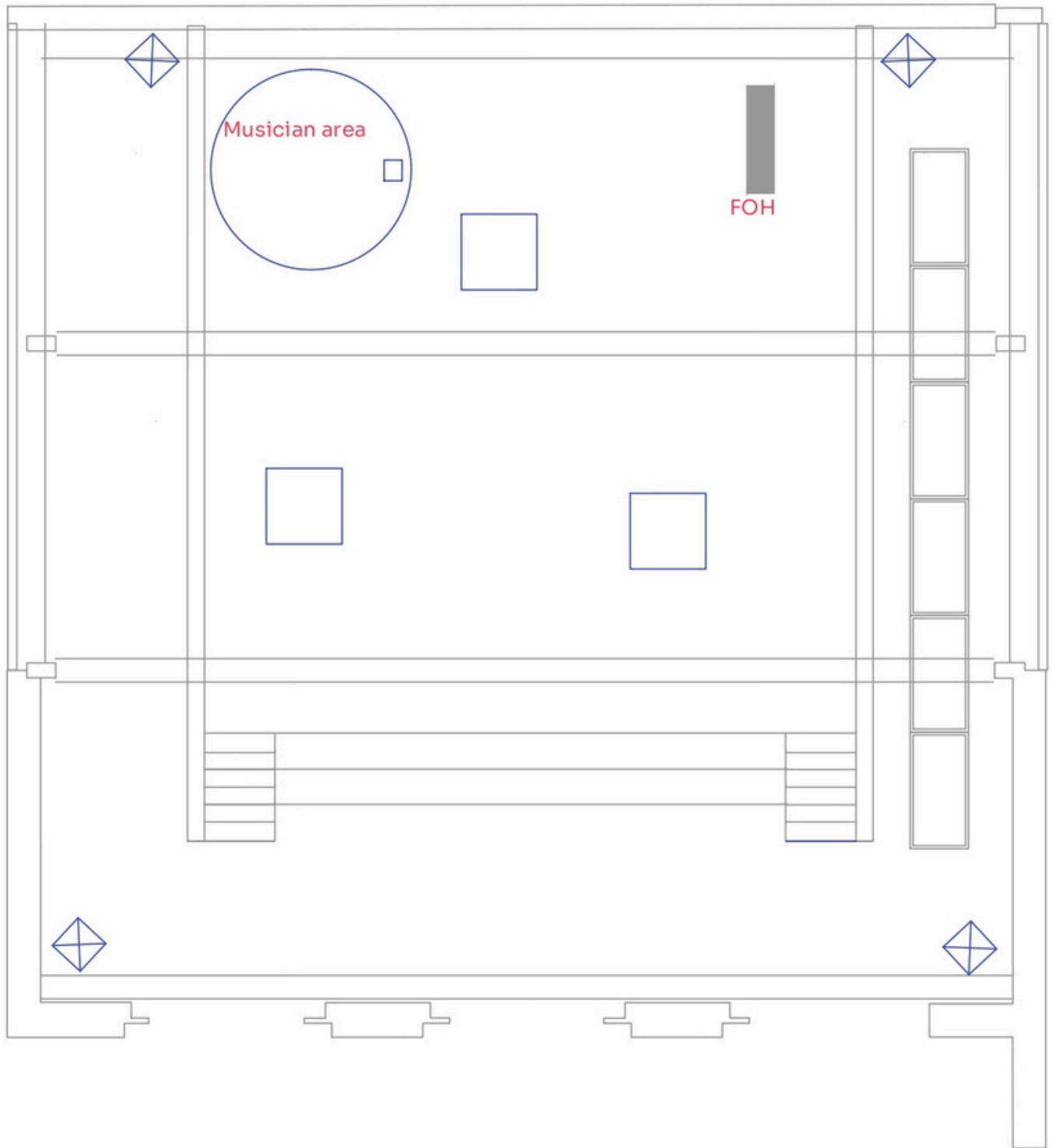
### THIS IS A DAXOPHON\*:



\*the instrument is connected with LED lights. You can have a look on the [video documentation](#) by the time 45:20.



# SOUND / SPACE PLAN



## Equipment List

	Existing Sound system		Area for Muscician Daxophon
	3 Speakers/ base for performers		Sound mixer on the stage

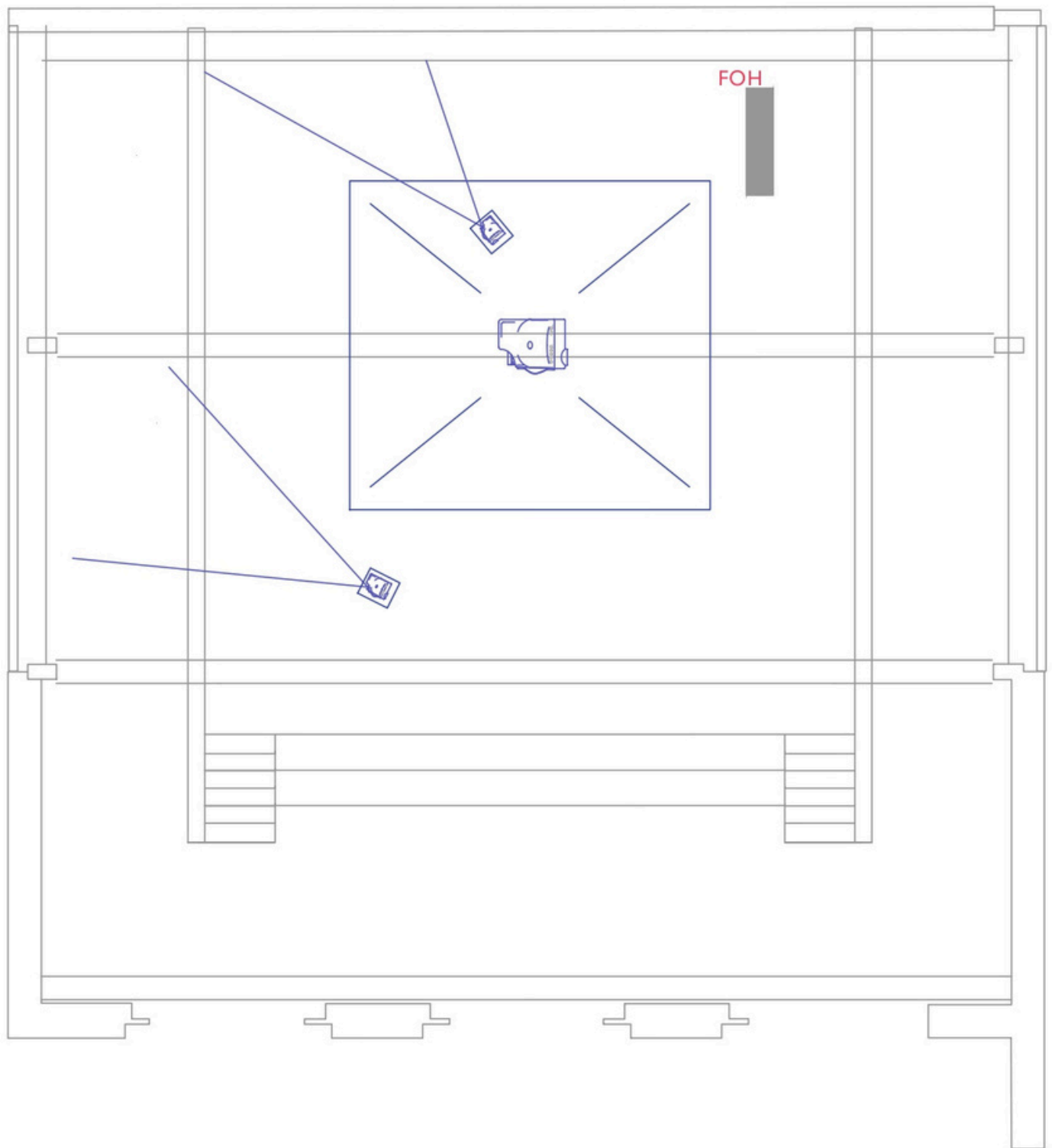
## VIDEO

- We have projections on the bodies of the performers, floor and walls
- \_ Resolution of the videos: 1920 x 1080
- 3 x cables HDMI (the longest possible)
  - 1 Laptop with the video program “Isadora” (three Outputs: 1x HDMI, 2x USB-c with adapters)
- \_ The laptop that was used before on the previous shows:  
Asus proart studiobook with 64 GB ram and NVIDIA rtx 3060
- \_ The Video person can bring their laptop with 3 video outputs: 1 regular HDMI and two via USB-C to HDMI adapters. But if there is a possibility to use a laptop with 3 outputs from the venue, they would prefer that.



## PROJECTOR RIGGING

- 1 projector 8000 Lm hanging from the ceiling for projection on the floor
- 2 projector min 6000 Lm on 2 trolleys (in German Rollbretter/Hund) for projections on the walls, check picture on page 6.
- The shutters need to be closed from the tech table, so that no light shines through on the floor nor wall during the performance.

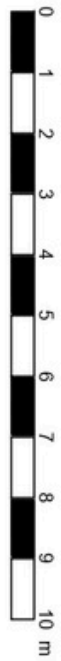
# VIDEO PLAN



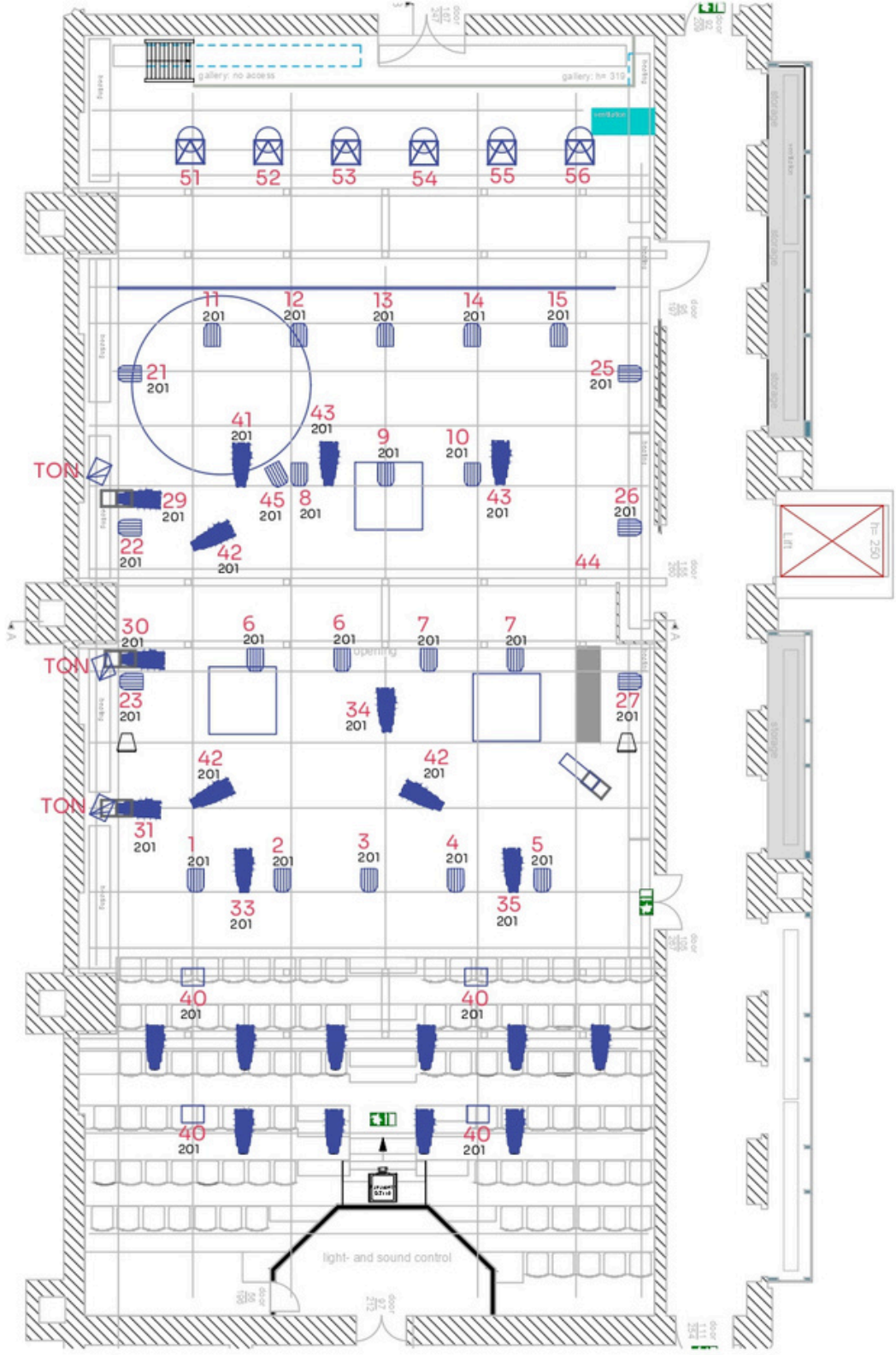
## Equipment List

-  1 Projector 8000 Lm hanged  
Projection surface on the floor
-  2 Projectors 6000  
mobile on the floor "Hund"

# LIGHT PLAN



lpses



## Equipment List

	24 PC 1K		04 Floods 500 W
	12 S4 Profile 50		6 Floor Stands
	1 Following Spot		3 Booms
	3 LED Floods controlled by sound		6 Aurora Cyc Single

## WE BRING

- 1 stool for musician (to confirm)
- Instrument: Daxophone + guitar pedals

## WE NEED

- 1 Laptop with the video program “Isadora” (drei Outputs: 1x HDMI, 2x USB-c with adapters for HDMI)
- All the items described in “VIDEO P. 8-9”, “SOUND P. 6-7” and “LIGHT P.10”



## **STAFF REQUIRED FOR SET UP AND SHOWS**

### **“SUPER SUPERFICIAL” STAFF**

- 1 Producer and assistant director - general coordinator
- 1 Video designer
- 1 Lighting designer

### **BY THE ORGANIZER / VENUE**

It must provide the technical staff (machinery, sound, lighting, video, etc.) necessary to achieve set-up in a timely manner.

Consider:

- 1 Sound technician to assist our musician (who will arrive on the technical set up). Required for rehearsals and during the shows.
- 1 Light control desk operator for recording cues/corrections during set up and rehearsals.

## DRESSING ROOM AND ANNEXED SPACES

Indispensable:

- The stage floor must be very clean before the rehearsals and the shows.
- 1 dressing room for 3 performers including tables, chairs, mirrors, hangers, heating and good lighting.
- We need a quiet space (can be the same dressing room of the performers) with a mattress or a bean bag for a person with chronic pain.
- The stage, dressing rooms and pre-warm-up space must be clean and heated if it is cold (for reference: it must be between 22-24 °C since most of the time the performers warm up and perform naked).
- Additional space, ideally: dance studio or similar for performers 2 hours before the general rehearsal and shows (for stretching and warming up before entering the scene).
- Wi-Fi connection on stage and dressing rooms.

Let us know if it is possible to provide:

- 1 separate dressing room for musician, production and technical staff.
- Healthy catering during set up and shows: including nuts, fruits, energy bars, cereals, coffee, tea, water, juice for all staff (artistic & technical).



## CONTACTS

Please add in cc [abanaia@abanaia.com](mailto:abanaia@abanaia.com) in all the communication with any person of the team.

Choreographer / Kysy Fischer / [e-mail](#) / 004915224738731

Production and Choreography assistant / Óscar Barbosa / [e-mail](#) / 0049 1522 9486222

Musician / Kriton Beyer / [e-mail](#)

Video designer / Leo Naomi Baur / [e-mail](#)

Lighting designer / Raquel Rosildete [e-mail](#)

[www.abanaia.com](http://www.abanaia.com)

[abanaia@abanaia.com](mailto:abanaia@abanaia.com)

